



Jacksonville Cornerstone Regional Development Partnership

Labor Force Availability Report 2004

Middleburg

Clay County

Prepared by:



1329 Kingsley Avenue
Orange Park, Florida 32073
Phone (904) 264-3282



Labor Force Availability Report 2004

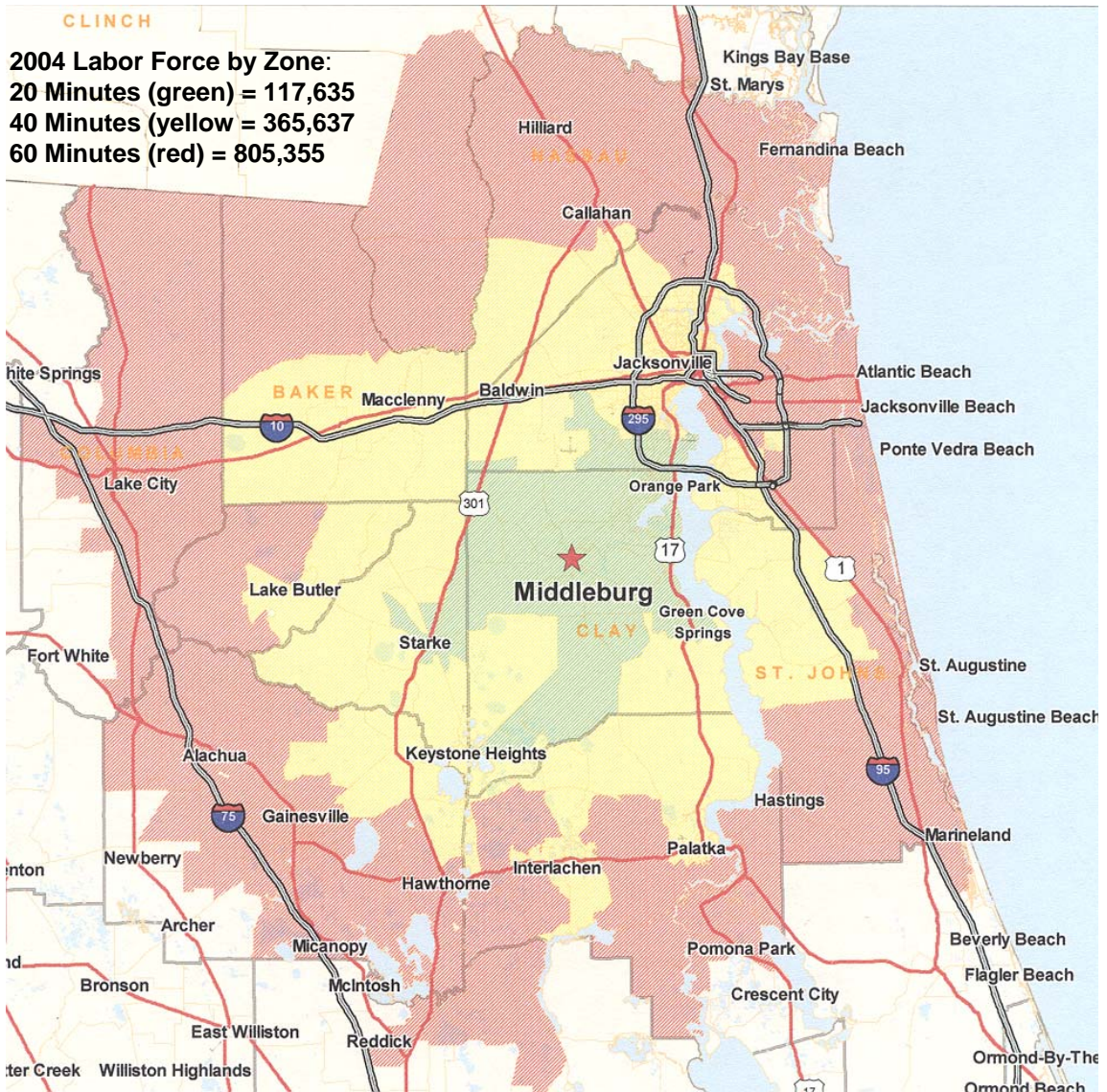
Middleburg

Table of Contents

Map of Commuting Zones	1
<i>Data from the United States Census of Population, 2000</i>	
Table 1. Employment Status of the Population	2
Table 2. Occupation of the Civilian Labor Force	3
Table 3. Industry of Employment of the Civilian Labor Force	4
<i>Data from the Jacksonville Regional Labor Force Availability Study, 2004</i>	
Table 4. Employment Status of Working Adults	5
Table 5. Commuting Time to Work	6
Table 6. Commuting Mileage to Work	7
Table 7. Gender and Age of Workers	8
Table 8. Educational Attainment of Workers	9
Table 9. Industry of Employment by SIC Major Group	10
Table 10. Current Salary Range of Workers	11
Table 11. Experience in Specific Industries and Skill Areas	12
Sources and Methods	13

Middleburg

Overview of Commuting Zones



Shaded areas include census block groups that fall within the 20, 40, and 60-minute commuting zones. Commuting zones were defined by MapInfo DriveTime™ using assumptions for traffic patterns at peak travel time (8:00 AM on weekday mornings).

**Jacksonville Cornerstone Regional Development Partnership
Labor Force Availability Report**

Middleburg, Clay County, Florida

Center of zone: Intersection of Florida Highway 21 and Florida Highway 218

Latitude 30.0634 N, Longitude 81.8741 W

Source: U.S. Bureau of the Census, Census 2000 Summary File 3, Table P43.

Table 1 - Employment Status of the Population 16 Years and Over

Data for the population living within:

Data from the 2000 Census of Population:

20 Minutes 40 Minutes 60 Minutes

Total population age 16 and over	150,008	528,116	1,148,838
Total population 16+ not in the labor force	48,189	193,725	408,234
Total population 16+ in the armed forces	4,970	7,706	19,112
Total population 16+ unemployed, but in labor force	4,546	16,862	37,333
Total population 16+ in the civilian labor force	96,849	326,685	721,492
Total population 16+ in the labor force, 2000	101,819	334,391	740,604

Current Estimate:

Total population 16+ in the labor force, 2004	117,635	365,637	805,355
---	---------	---------	---------

5-Year Forecast:

Total population 16+ in the labor force, 2009	137,625	406,872	889,806
---	---------	---------	---------

Projected Percentage Growth, 2004-2009:

17.0% 11.3% 10.5%

Current estimate and forecast for 2009 provided by Applied Geographic Solutions, Inc. (www.appliedgeographic.com).

Jacksonville Cornerstone Regional Development Partnership
Labor Force Availability Report

Middleburg, Clay County, Florida

Center of zone: Intersection of Florida Highway 21 and Florida Highway 218

Latitude 30.0634 N, Longitude 81.8741 W

Source: U.S. Bureau of the Census, Census 2000 Summary File 3, Table P50.

Table 2 - Occupation of the Civilian Labor Force 16 Years and Over

	<i>Number of workers living within:</i>		
	<u>20 Minutes</u>	<u>40 Minutes</u>	<u>60 Minutes</u>
Office and administrative support occupations	17,093	58,851	123,579
Sales and related occupations	11,476	35,289	81,934
Management occupations, except farmers and farm manager	7,767	25,135	58,078
Construction trades workers	4,759	16,249	33,727
Production occupations	4,711	17,858	35,499
Food preparation and serving related occupations	4,329	14,156	35,228
Education, training, and library occupations	4,286	14,377	38,008
Installation, maintenance, and repair occupations	5,842	14,976	28,735
Building and grounds cleaning and maintenance occupations	3,088	11,249	23,044
Motor vehicle operators	3,376	11,949	21,188
Health diagnosing and treating practitioners and technical occupations	2,996	8,633	24,810
Material moving workers	2,122	9,256	15,999
Financial specialists	1,848	7,031	15,494
Business operations specialists	2,103	7,141	14,953
Computer and mathematical occupations	1,816	6,425	15,240
Personal care and service occupations	2,130	7,218	16,739
Healthcare support occupations	1,590	6,217	12,573
Arts, design, entertainment, sports, and media occupations	1,022	3,875	11,596
Community and social services occupations	1,113	4,364	10,381
Health technologists and technicians	1,414	4,703	10,790
Legal occupations	492	2,800	6,549
Fire fighting, prevention, and law enforcement workers, including supervisors	1,570	5,262	10,663
Architects, surveyors, cartographers, and engineers	952	2,651	6,981
Other protective service workers, including supervisors	945	2,933	6,079
Supervisors, construction and extraction workers	1,000	2,836	5,230
Drafters, engineering, and mapping technicians	603	1,950	4,262
Life, physical, and social science occupations	415	1,408	6,138
Rail, water and other transportation occupations	310	1,211	2,339
Supervisors, transportation and material moving workers	261	967	1,730
Farming, fishing, and forestry occupations	243	1,367	3,298
Aircraft and traffic control occupations	454	830	1,582
Farmers and farm managers	103	511	1,423
Extraction workers	74	145	290
Total employed civilian labor force age 16+ (2000)	92,303	309,823	684,159

Jacksonville Cornerstone Regional Development Partnership
Labor Force Availability Report

Middleburg, Clay County, Florida

Center of zone: Intersection of Florida Highway 21 and Florida Highway 218

Latitude 30.0634 N, Longitude 81.8741 W

Source: U.S. Bureau of the Census, Census 2000 Summary File 3, Table P49.

Table 3 - Industry of Employment of the Civilian Labor Force 16 Years and Over

	<i>Number of workers living within:</i>		
	<u>20 Minutes</u>	<u>40 Minutes</u>	<u>60 Minutes</u>
Agriculture, Forestry and Fishing	537	2,223	5,416
Mining	176	429	689
Construction	8,041	24,921	50,650
Manufacturing	6,580	24,591	49,777
Wholesale Trade	3,351	12,574	23,977
Retail Trade	13,184	38,421	84,816
Transportation and Warehousing	6,396	22,100	39,965
Utilities	760	2,943	6,002
Information	2,536	9,350	20,770
Finance and Insurance	7,340	27,377	56,024
Real Estate	1,936	6,402	15,128
Professional, Scientific and Technical Services	3,615	13,350	33,797
Management Services	34	55	120
Administrative and Support and Waste Mgt	3,698	14,343	29,288
Educational Services	6,047	20,794	60,593
Health Care and Social Assistance	9,660	32,806	76,609
Arts, Entertainment and Recreation	1,056	3,100	10,301
Accommodation and Food Services	5,678	18,728	47,565
Other Services	4,391	15,177	32,270
Public Administration	7,287	20,139	40,402
Total Civilian Labor Force Age 16+	92,303	309,823	684,159

**Jacksonville Cornerstone Regional Development Partnership
Labor Force Availability Report**

Middleburg, Clay County, Florida

Center of zone: Intersection of Florida Highway 21 and Florida Highway 218

Latitude 30.0634 N, Longitude 81.8741 W

Source: Jacksonville Regional Labor Force Availability Study, August 2004.

Table 4 - Regional Survey Data 2004

Current Employment Status of Working Adults, 2004

	<i>Data for the population living within:</i>		
	<u>20 Minutes</u>	<u>40 Minutes</u>	<u>60 Minutes</u>
Survey sample size	583	1,624	2,552
Percentage currently employed full time	77%	78%	79%
Percentage currently employed part time	13%	13%	13%
Percentage not employed but looking for work*	10%	9%	8%
Total	100%	100%	100%
Estimated number currently employed full time	90,799	285,710	634,943
Estimated number currently employed part time	14,931	46,605	102,563
Estimated number not employed but looking for work*	11,905	33,322	67,849
Total estimated labor force, 2004	117,635	365,637	805,355

**This number includes all workers who are looking for work, whether or not they have filed for unemployment compensation. The number will exceed the published unemployment rates.*

**Jacksonville Cornerstone Regional Development Partnership
Labor Force Availability Report**

Middleburg, Clay County, Florida

Center of zone: Intersection of Florida Highway 21 and Florida Highway 218

Latitude 30.0634 N, Longitude 81.8741 W

Source: Jacksonville Regional Labor Force Availability Study, August 2004.

Table 5 - Regional Survey Data 2004

Current Commuting Time to Work

	<i>Data for the population living within:</i>		
	<u>20 Minutes</u>	<u>40 Minutes</u>	<u>60 Minutes</u>
Survey sample size	583	1,624	2,552
<u>Percentage of workers commuting:</u>			
No commute - work at home or nearby	5.0%	4.3%	4.1%
1 to 5 minutes	9.0%	10.8%	11.7%
6 to 10 minutes	8.8%	12.8%	13.9%
11 to 15 minutes	10.4%	11.9%	13.4%
16 to 20 minutes	12.4%	11.2%	11.2%
21 to 25 minutes	6.4%	5.8%	5.7%
26 to 30 minutes	14.9%	14.6%	14.5%
31 to 35 minutes	4.0%	4.6%	4.1%
36 to 45 minutes	16.5%	13.2%	12.0%
Over 45 minutes	8.8%	7.8%	6.9%
No fixed commute - it varies	3.6%	2.9%	2.5%
Total	100.0%	100.0%	100.0%
<u>Estimated number of workers commuting:</u>			
No commute - work at home or nearby	5,905	15,603	33,390
1 to 5 minutes	10,630	39,528	94,000
6 to 10 minutes	10,393	46,810	112,147
11 to 15 minutes	12,283	43,689	108,155
16 to 20 minutes	14,645	40,829	90,371
21 to 25 minutes	7,559	21,324	46,093
26 to 30 minutes	17,480	53,311	116,502
31 to 35 minutes	4,724	16,904	32,664
36 to 45 minutes	19,370	48,370	96,541
Over 45 minutes	10,393	28,606	55,529
No fixed commute - it varies	4,252	10,662	19,961
Total	117,635	365,637	805,355
Average (mean) commuting time in minutes	26.4	24.9	23.7
Median commuting time in minutes	25.0	20.0	20.0

**Jacksonville Cornerstone Regional Development Partnership
Labor Force Availability Report**

Middleburg, Clay County, Florida

Center of zone: Intersection of Florida Highway 21 and Florida Highway 218

Latitude 30.0634 N, Longitude 81.8741 W

Source: Jacksonville Regional Labor Force Availability Study, August 2004.

Table 6 - Regional Survey Data 2004

Current Commuting Mileage to Work

	<i>Data for the population living within:</i>		
	<u>20 Minutes</u>	<u>40 Minutes</u>	<u>60 Minutes</u>
Survey sample size	583	1,624	2,552
<u>Percentage of workers commuting:</u>			
0 to 5 miles	22.6%	26.4%	29.2%
6 to 10 miles	15.6%	16.3%	16.8%
11 to 15 miles	16.7%	15.0%	16.1%
16 to 20 miles	13.3%	11.4%	9.6%
21 to 25 miles	9.7%	7.4%	6.9%
26 to 30 miles	7.2%	6.3%	5.8%
31 to 40 miles	6.3%	8.2%	7.1%
Over 40 miles	5.2%	6.1%	5.9%
Mileage varies	3.4%	3.0%	2.6%
Total	100.0%	100.0%	100.0%
<u>Estimated number of workers commuting:</u>			
0 to 5 miles	26,554	96,472	235,229
6 to 10 miles	18,322	59,627	135,213
11 to 15 miles	19,650	54,846	129,289
16 to 20 miles	15,667	41,626	77,364
21 to 25 miles	11,418	27,001	55,410
26 to 30 miles	8,497	23,063	47,046
31 to 40 miles	7,435	29,813	56,803
Over 40 miles	6,107	22,219	47,743
Mileage varies	3,983	10,969	21,258
Total	117,635	365,637	805,355
Average (mean) commuting miles	17.1	17.3	16.3
Median commuting miles	15.0	14.0	12.0

**Jacksonville Cornerstone Regional Development Partnership
Labor Force Availability Report**

Middleburg, Clay County, Florida
Center of zone: Intersection of Florida Highway 21 and Florida Highway 218
Latitude 30.0634 N, Longitude 81.8741 W
Source: Jacksonville Regional Labor Force Availability Study, August 2004.

Table 7 - Regional Survey Data 2004

Gender and Age of Workers

	<i>Data for the population living within:</i>		
	<u>20 Minutes</u>	<u>40 Minutes</u>	<u>60 Minutes</u>
Survey sample size	583	1,624	2,552
<i>Workers by Gender:</i>			
Percentage male	54.1%	51.7%	51.4%
Percentage female	45.9%	48.3%	48.6%
Total	100.0%	100.0%	100.0%
Estimated number of male workers	63,685	188,943	413,622
Estimated number of female workers	53,950	176,694	391,733
Total estimated labor force, 2004	117,635	365,637	805,355
<i>Workers by Age Range:</i>			
Percentage under age 25	13.1%	13.4%	12.7%
Percentage age 25 to 34	15.2%	17.4%	17.2%
Percentage age 35 to 44	27.7%	26.8%	25.2%
Percentage age 45 to 54	24.6%	25.1%	25.7%
Percentage age 55 to 64	17.3%	14.9%	16.4%
Percentage age 65 or older	2.1%	2.4%	2.8%
Total	100.0%	100.0%	100.0%
Estimated number under age 25	15,397	48,935	102,598
Estimated number age 25 to 34	17,861	63,798	138,322
Estimated number age 35 to 44	32,642	97,869	202,625
Estimated number age 45 to 54	28,947	91,695	207,197
Estimated number age 55 to 64	20,324	54,423	131,749
Estimated age 65 or older	2,464	8,918	22,863
Total estimated labor force, 2004	117,635	365,637	805,355

**Jacksonville Cornerstone Regional Development Partnership
Labor Force Availability Report**

Middleburg, Clay County, Florida

Center of zone: Intersection of Florida Highway 21 and Florida Highway 218

Latitude 30.0634 N, Longitude 81.8741 W

Source: Jacksonville Regional Labor Force Availability Study, August 2004.

Table 8 - Regional Survey Data 2004

Educational Attainment of Workers

	<i>Data for the population living within:</i>		
	<u>20 Minutes</u>	<u>40 Minutes</u>	<u>60 Minutes</u>
Survey sample size	583	1,624	2,552
<u>Percentage of workers with:</u>			
Less than high school	5.2%	6.0%	5.9%
High school graduate or GED	30.2%	31.9%	30.3%
Vocational or technical degree	2.3%	2.6%	3.3%
Some college, but not a college degree	22.2%	18.8%	18.5%
Community college or Associate's Degree	11.9%	12.0%	11.8%
4-Year Bachelor's Degree	21.1%	20.7%	20.5%
Master's Degree or Ph.D.	7.1%	8.0%	9.7%
Total	100.0%	100.0%	100.0%
<u>Estimated number of workers with:</u>			
Less than high school	6,059	21,864	47,442
High school graduate or GED	35,520	116,529	244,197
Vocational or technical degree	2,716	9,536	26,777
Some college, but not a college degree	26,118	68,615	148,730
Community college or Associate's Degree	13,999	43,960	94,885
4-Year Bachelor's Degree	24,864	75,825	165,029
Master's Degree or Ph.D.	8,358	29,307	78,294
Total estimated labor force, 2004	117,635	365,637	805,355

**Jacksonville Cornerstone Regional Development Partnership
Labor Force Availability Report**

Middleburg, Clay County, Florida

Center of zone: Intersection of Florida Highway 21 and Florida Highway 218

Latitude 30.0634 N, Longitude 81.8741 W

Source: Jacksonville Regional Labor Force Availability Study, August 2004.

Table 9 - Regional Survey Data 2004

Industry of Employment - By SIC Major Group

The table shows the top 10 industries of employment by SIC major group.

	<i>Data for the population living within:</i>		
	<u>20 Minutes</u>	<u>40 Minutes</u>	<u>60 Minutes</u>
Survey sample size	583	1,624	2,552
<u>Percentage of workers by SIC Major Group:</u>			
82 Educational Services	6.8%	10.9%	10.9%
80 Health Services	10.9%	11.1%	10.3%
17 Construction - Special Trade Contractors	5.3%	5.2%	4.8%
58 Eating & Drinking Places	3.3%	2.9%	4.1%
97 National Security & International Affairs	10.3%	4.7%	4.0%
73 Business Services	3.7%	3.5%	3.8%
42 Motor Freight Transportation & Warehousing	4.7%	4.3%	3.1%
92 Justice, Public Order, & Safety	1.9%	3.3%	3.1%
54 Food Stores	3.5%	3.0%	2.8%
15 Building Construction - General Contractors	3.1%	3.1%	2.8%
Total % Employed in Top 10 SIC Major Groups	53.6%	51.8%	49.7%
<u>Number of workers by SIC Major Group:</u>			
82 Educational Services	8,026	39,749	87,943
80 Health Services	12,841	40,768	83,215
17 Construction - Special Trade Contractors	6,191	18,855	38,771
58 Eating & Drinking Places	3,898	10,702	33,412
97 National Security & International Affairs	12,153	17,072	32,151
73 Business Services	4,357	12,740	30,575
42 Motor Freight Transportation & Warehousing	5,503	15,543	24,901
92 Justice, Public Order, & Safety	2,293	11,976	24,586
54 Food Stores	4,128	10,956	22,695
15 Building Construction - General Contractors	3,669	11,211	22,380
Total Number Employed in Top 10 SIC Major Groups	63,060	189,571	400,629
Total estimated labor force, 2004	117,635	365,637	805,355

**Jacksonville Cornerstone Regional Development Partnership
Labor Force Availability Report**

Middleburg, Clay County, Florida

Center of zone: Intersection of Florida Highway 21 and Florida Highway 218

Latitude 30.0634 N, Longitude 81.8741 W

Source: Jacksonville Regional Labor Force Availability Study, August 2004.

Table 10 - Regional Survey Data 2004

Current Salary Range of Workers

	<i>Data for the population living within:</i>		
	<u>20 Minutes</u>	<u>40 Minutes</u>	<u>60 Minutes</u>
Survey sample size	583	1,624	2,552
<u>Percentage of workers earning:</u>			
Less than \$15,000	10.2%	11.5%	11.7%
\$15,000 to \$24,999	15.2%	17.1%	17.8%
\$25,000 to \$34,999	18.2%	21.0%	21.6%
\$35,000 to \$49,999	28.2%	23.6%	22.7%
\$50,000 to \$74,999	16.8%	16.8%	15.4%
\$75,000 to \$99,999	6.4%	5.3%	5.8%
\$100,000 or more	5.0%	4.7%	5.0%
Total	100.0%	100.0%	100.0%
<u>Estimated number of workers earning:</u>			
Less than \$15,000	11,987	42,048	94,500
\$15,000 to \$24,999	17,840	62,463	143,089
\$25,000 to \$34,999	21,464	76,784	174,079
\$35,000 to \$49,999	33,172	86,229	182,496
\$50,000 to \$74,999	19,792	61,549	124,342
\$75,000 to \$99,999	7,526	19,501	46,676
\$100,000 or more	5,854	17,063	40,172
Total estimated labor force, 2004	117,635	365,637	805,355

**Jacksonville Cornerstone Regional Development Partnership
Labor Force Availability Report**

Middleburg, Clay County, Florida

Center of zone: Intersection of Florida Highway 21 and Florida Highway 218

Latitude 30.0634 N, Longitude 81.8741 W

Source: Jacksonville Regional Labor Force Availability Study, August 2004.

**Table 11 - Regional Survey Data 2004
Experience in Specific Industries or Skill Areas**

	<i>Data for the population living within:</i>		
	<u>20 Minutes</u>	<u>40 Minutes</u>	<u>60 Minutes</u>
Survey sample size	583	1,624	2,552
<u>Percentage of workers with experience in:</u>			
Basic computer skills, such as data entry or word processing	67.4%	66.5%	65.5%
Advanced computer skills, such as programming or computer aided design	17.4%	17.1%	17.4%
Computer networking or systems administration	11.1%	10.6%	11.0%
Manufacturing production work	10.8%	11.5%	11.7%
Skilled trades such as electrician or welding	13.8%	12.0%	12.4%
Medical patient care	11.9%	12.6%	12.3%
Medical technician specialties	2.9%	2.0%	2.0%
Electronics manufacturing or repair	7.7%	5.6%	5.6%
Distribution (warehousing, transportation, logistics)	13.8%	13.5%	12.3%
Finance or insurance	11.8%	12.0%	11.6%
Aviation	9.9%	5.5%	5.1%
<u>Estimated number of workers with experience in:</u>			
Basic computer skills, such as data entry or word processing	79,293	243,159	527,239
Advanced computer skills, such as programming or computer aided design	20,476	62,475	139,903
Computer networking or systems administration	13,048	38,654	88,952
Manufacturing production work	12,647	42,025	94,301
Skilled trades such as electrician or welding	16,260	44,047	99,930
Medical patient care	14,052	46,070	99,367
Medical technician specialties	3,413	7,416	15,764
Electronics manufacturing or repair	9,033	20,451	45,039
Distribution (warehousing, transportation, logistics)	16,260	49,441	98,804
Finance or insurance	13,851	44,047	93,175
Aviation	11,643	20,001	41,380
Total estimated labor force, 2004	117,635	365,637	805,355



Labor Force Availability Report 2004

Sources and Methods

In 2004 the Jacksonville Cornerstone Regional Development Partnership commissioned Ulrich Research Services, Inc. to define and describe the labor market living within 20, 40, and 60-minute commuting times of selected nodes in the Greater Jacksonville area.

Definition of Commuting Zones

The commuting zones identified in this study were defined by MapInfo Corporation's DriveTime™ software system using assumptions for urban traffic patterns at peak travel time (8:00 AM on weekday mornings). Each zone is an aggregation of U.S. Census Block Groups. The block group is the smallest geographic unit for which the United States Bureau of the Census publishes detailed population and housing data derived from Summary Tape File 3. The file consists of data collected from a 1-in-6 sample and weighted to represent the total population.

There are 633 census block groups in the six-county Jacksonville Region (including Duval, Nassau, Baker, Clay, St. Johns, and Putnam counties). In the 2000 Census of Population and Housing the average block group in the region included 1,885 people, 691 households, and a labor force consisting of 878 workers.

We used "population-weighted centroids" to determine whether individual block groups should be included in the commuting zones for each node. A centroid is the geographic center of population for a block group. It is defined as a point (based on latitude and longitude) and weighted based on the population of the census blocks comprising the block group. Block groups typically consist of 3 to 6 census blocks. If the centroid of the block group fell within a commuting zone defined by DriveTime, the entire population of the block group was included in the labor market profile. If the commuting zone included portions of a block group but did not include the population-weighted centroid, the block group was excluded from the profile.

Labor Force Availability Reports

Data from the U.S. Census of Population and Housing, 2000

This report includes three Labor Force Availability Reports based on the aggregated Census 2000 data for each commuting zone. These reports cover the following topics:

1. Employment Status of the Population 16 Years and Over
2. Occupation of the Civilian Labor Force 16 Years and Over
3. Industry of Employment of the Civilian Labor Force 16 Years and Over

Because the data in each report is weighted from the 1-in-6 Census sample, there may be some minor variations in the market totals shown on some reports.

Data from the Jacksonville Regional Labor Force Availability Study, 2004

An additional set of eight tables includes data gathered in the Jacksonville Regional Labor Force Availability Study for 2004. The study is based on a telephone survey of working households in the Greater Jacksonville region conducted between June 2 and July 17, 2004. A total of 1,800 households participated in the study. In each household one respondent provided information on up to three working adults. In total, the survey collected information on 3,136 workers, or an average of 1.7 workers per household.

The survey data published in this report is based on a random sample of households and is subject to sampling error. While the range of error on the total sample of 1,800 households is plus or minus 2.3% at the 95% level of confidence, the range of error will vary based on the number of surveyed households that live in each defined commuting zone. The range of error on a sample of 200 households, for example, is plus or minus 6.9% at the 95% level of confidence.

This Labor Force Availability Report includes the following eight reports based on the regional survey findings:

4. Current Employment Status of Working Adults
5. Current Commuting Time to Work
6. Current Commuting Mileage to Work
7. Age and Gender of Workers
8. Educational Attainment of Workers
9. Industry of Employment by SIC Major Group
10. Current Salary Range of Workers
11. Experience in Specific Industries or Skill Areas